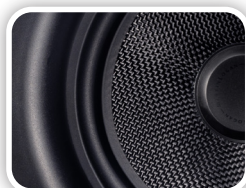


# Motion<sup>®</sup> CI

MARTIN LOGAN  
Folded Motion<sup>®</sup> In-Wall and In-Ceiling Speakers

MC4, MC6, MC6-HT,  
MC8, MW4-LCR, MW6



**Our most affordable line of CI speakers.** All MartinLogan Motion CI Series speakers feature our signature Folded Motion Tweeter or FMT. This innovative piece of audio technology provides incredible detail, precise clarity, clean output, and high efficiency in a small but mighty package. Pairing this tweeter with lightweight woven fiberglass woofers means that Motion CI delivers a clean and balanced sound that is perfectly suited for any application. Whether you listen to music, movies, or a little bit of everything, Motion CI gives you a true high-end audio experience at an affordable prices. To round out the assortment, pre-construction brackets are available for all models, and all in-ceiling models have square grilles and retrofittable back enclosures available separately.



## MC4

**System Frequency Response**  
90 - 25,000 Hz  $\pm$ 3dB

**Aiming**  
N/A

**Sensitivity**  
90dB @2.83V/ 1 meter

**Impedance**  
Compatible with 8 ohms

**Crossover Frequency**  
2,230 Hz

**High Frequency Driver**  
FMT Transducer

1" x 1.4"  
(2.6cm x 3.6cm)  
Opening

5.25" x 1.75"  
(13.3cm x 4.4cm)  
Diaphragm

**Low Frequency Driver**  
4" (10.16cm) black  
fiberglass cone

**Binding Post Inputs**  
Push style accommodates  
wire up to 12AWG

**Suitable Amplifier Range**  
50–120 Watts

**Maximum Power Handling**  
60 Watts

**Weight**  
2.02 lbs.  
(0.9 kg) each

**Overall Size (dia. x depth)**  
5.63" x 5.65"  
(14.3cm x 14.3cm)

**Required opening**  
4.89" (12.41cm)  
diameter

**Projection from wall**  
0.26" (0.65cm)

**Depth required behind wall**  
5.50" (13.9cm)



## MC6

**System Frequency Response**  
62 - 25,000 Hz  $\pm$ 3dB

**Aiming**  
N/A

**Sensitivity**  
90dB @2.83V/ 1 meter

**Impedance**  
Compatible with 8 ohms

**Crossover Frequency**  
2,570 Hz

**High Frequency Driver**  
FMT Transducer

1" x 1.4"  
(2.6cm x 3.6cm)  
Opening

5.25" x 1.75"  
(13.3cm x 4.4cm)  
Diaphragm

**Low Frequency Driver**  
6.5" (16.51cm) black  
fiberglass cone

**Binding Post Inputs**  
Push style accommodates  
wire up to 12AWG

**Suitable Amplifier Range**  
50–150 Watts

**Maximum Power Handling**  
75 Watts

**Weight**  
5.1 lbs.  
(2.31 kg) each

**Overall Size (dia. x depth)**  
8.64" x 4.57"  
(21.94cm x 11.61cm)

**Required opening**  
7.65" (19.43cm)  
diameter

**Projection from wall**  
0.31" (0.77cm)

**Depth required behind wall**  
4.43" (11.26cm)



## MC6-HT

**System Frequency Response**  
62 - 25,000 Hz  $\pm$ 3dB

**Aiming**  
N/A

**Sensitivity**  
90dB @2.83V/ 1 meter

**Impedance**  
Compatible with 8 ohms

**Crossover Frequency**  
2,570 Hz

**High Frequency Driver**  
FMT Transducer

1" x 1.4"  
(2.6cm x 3.6cm)  
Opening

5.25" x 1.75"  
(13.3cm x 4.4cm)  
Diaphragm

**Low Frequency Driver**  
6.5" (16.51cm) black  
fiberglass cone

**Binding Post Inputs**  
Push style accommodates  
wire up to 12AWG

**Suitable Amplifier Range**  
50–150 Watts

**Maximum Power Handling**  
75 Watts

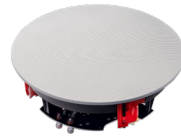
**Weight**  
6.08 lbs.  
(2.75 kg) each

**Overall Size (dia. x depth)**  
11.30" x 6.88"  
(28.7cm x 17.48cm)

**Required opening**  
10.23" (25.9cm)  
diameter

**Projection from wall**  
0.35" (0.89cm)

**Depth required behind wall**  
6.77" (17.18cm)



## MC8

**System Frequency Response**  
44 - 25,000 Hz  $\pm$ 3dB

**Aiming**  
N/A

**Sensitivity**  
91dB @2.83V/ 1 meter

**Impedance**  
Compatible with 8 ohms

**Crossover Frequency**  
2,220 Hz

**High Frequency Driver**  
FMT Transducer

1" x 1.4"  
(2.6cm x 3.6cm)  
Opening

5.25" x 1.75"  
(13.3cm x 4.4cm)  
Diaphragm

**Low Frequency Driver**  
8" (20.32cm) black  
fiberglass cone

**Binding Post Inputs**  
Push style accommodates  
wire up to 12AWG

**Suitable Amplifier Range**  
50–200 Watts

**Maximum Power Handling**  
100 Watts

**Weight**  
6 lbs. each  
(2.72 kg)

**Overall Size (dia. x depth)**  
10.35" x 4.95"  
(26.28cm x 12.57cm)

**Required opening**  
9.25" (23.5cm)  
diameter

**Projection from wall**  
0.33" (0.83cm)

**Depth required behind wall**  
4.81" (12.22cm)



## MW6

**System Frequency Response**  
62 - 25,000 Hz  $\pm$ 3dB

**Aiming**  
N/A

**Sensitivity**  
90dB @2.83V/ 1 meter

**Impedance**  
Compatible with 8 ohms

**Crossover Frequency**  
2,920 Hz

**High Frequency Driver**  
FMT Transducer

1" x 1.4"  
(2.6cm x 3.6cm)  
Opening

5.25" x 1.75"  
(13.3cm x 4.4cm)  
Diaphragm

**Low Frequency Driver**  
6.5" (16.51cm) black  
fiberglass cone

**Binding Post Inputs**  
Push style accommodates  
wire up to 12AWG

**Suitable Amplifier Range**  
50–120 Watts

**Maximum Power Handling**  
60 Watts

**Weight**  
6 lbs. each  
(2.72 kg)

**Overall Size (l x w x depth)**  
8.04" x 11.07" x 4.16"  
(20.43 x 28.13 x 10.55cm)

**Required opening**  
6.97" x 11.07"  
(17.70cm x 28.13cm)

**Projection from wall**  
0.31" (0.79cm)

**Depth required behind wall**  
4.04" (10.25cm)



## MW4-LCR

**System Frequency Response**  
78 - 25,000 Hz  $\pm$ 3dB

**Aiming**  
N/A

**Sensitivity**  
93dB @2.83V/ 1 meter

**Impedance**  
Compatible with 8 ohms

**Crossover Frequency**  
2,800 Hz

**High Frequency Driver**  
FMT Transducer

1" x 1.4"  
(2.6cm x 3.6cm)  
Opening

5.25" x 1.75"  
(13.3cm x 4.4cm)  
Diaphragm

**Low Frequency Driver**  
4" (10.16 cm) black  
fiberglass cone

**Binding Post Inputs**  
Push style accommodates  
wire up to 12AWG

**Suitable Amplifier Range**  
50–200 Watts

**Maximum Power Handling**  
100 Watts

**Weight**  
6.02 lbs.  
(2.73 kg) each

**Overall Size (l x w x depth)**  
12.74" x 6.13" x 2.69"  
(32.36 x 15.56 x 6.82cm)

**Required opening**  
11.87" x 5.25"  
(30.14cm x 13.34cm)

**Projection from wall**  
0.28" (0.7cm)

**Depth required behind wall**  
2.57" (6.52cm)



Specifications are subject to change without notice.